

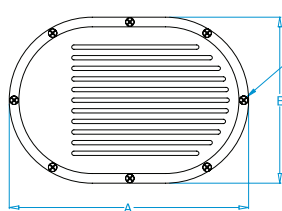
SC SERIES - SLOTTED STRAINER WITH MOUNT RING



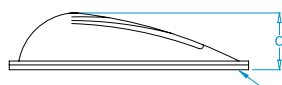
SC-4300-L
(Hi-Flow)



SC-4000-L
(Standard-Flow)



SCREWS FOR
MOUNTING
SCOOP TO
MOUNT RING
ARE INCLUDED



MOUNT RING
INCLUDED
MOUNT RING TO
HULL THEN MOUNT
SCOOP TO RING



SC SERIES

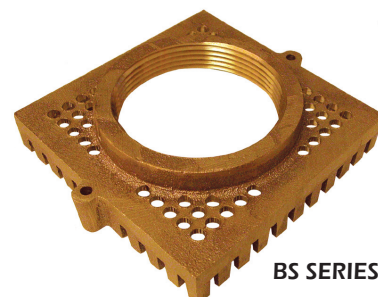
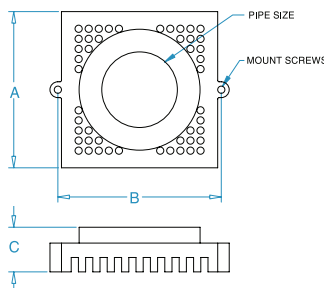
SC Series provides coarse primary filtration. SC hi-flow sizes (shaded versions below) provide greater flow and less restriction. SC-4300 is available now; smaller sizes available soon. All models are available with or without the mount ring.

BRONZE LESS RING	BRONZE WITH RING	ALUMINUM LESS RING	ALUMINUM WITH RING	MAX T-HULL	A inch	B inch	C inch	SCREWS	PKG	Ratio of Open Area to Pipe Size								
										1/2'	3/4'	1'	1-1/4'	1-1/2'	2'	2-1/2'	3'	4'
SC-1000-L	SC-1000	SC-1000-L AL	SC-1000 AL	1"	5.25	3.62	1.25	6 #10	2	13.4	6.0	3.3	-	-	-	-	-	-
SC-1075-L	SC-1075	-	-	1"	5.25	3.62	1.25	6 #10	2	-	-	-	-	-	-	-	-	-
SC-1500-L	SC-1500	SC-1500-L AL	SC-1500 AL	1-1/2"	6.82	4.70	1.50	6 #10	2	20.2	9.0	5.0	3.2	2.2	-	-	-	-
SC-1512-L	SC-1512	-	-	1-1/2"	6.82	4.70	1.50	6 #10	2	-	-	-	-	-	-	-	-	-
SC-2500-L	SC-2500	SC-2500-L AL	SC-2500 AL	2-1/2"	8.50	6.00	2.00	6 #10	2	36.0	16.0	9.0	5.8	4.0	2.2	1.4	-	-
SC-2520-L	SC-2520	-	-	2-1/2"	8.50	6.00	2.00	6 #10	2	-	-	-	-	-	-	-	-	-
SC-4000-L	SC-4000	SC-4000-L AL	SC-4000 AL	4"	12.50	8.62	2.75	8 #10	2	109.0	48.4	27.2	17.4	12.1	6.8	4.4	3.0	1.7
SC-4300-L	SC-4300	-	-	4"	12.50	8.62	2.75	8 #10	2	176.0	78.2	43.9	28.2	19.6	11.0	7.0	4.9	2.8

Dimensions and ratios for aluminum models are identical to bronze models.

BS SERIES - BILGE STRAINER

- Use for preventing large debris in the bilge area from entering bilge pumps.
- Ideal for use with GROCO® SBV-P series Safety Seacock with side port.
- Threaded NPT for use with straight or 90° pipe to hose adapters.

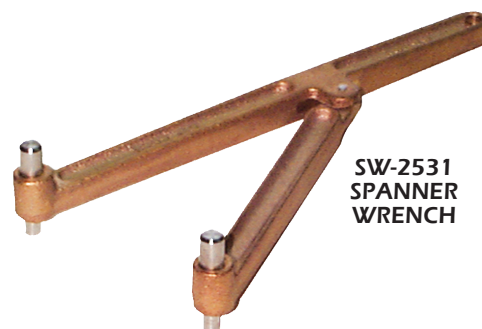


BS SERIES

MODEL	THREAD NPT	A inch	B inch	C inch	USE WITH SBV-P MODEL	PKG
BS-750	3/4"	1.88"	2.13"	2.00"	-	1
BS-1000	1"	1.88"	2.13"	2.00"	SBV-1250-P	1
BS-1250	1-1/4"	3.40"	3.63"	2.00"	SBV-1500-P	1
BS-1500	1-1/2"	3.40"	3.63"	2.00"	SBV-2000-P	1
BS-2000	2"	5.25"	3.63"	2.00"	SBV-2500-P	1
BS-2500	2-1/2"	5.25"	3.63"	2.00"	SBV-3000-P	1
BS-3000	3"	5.25"	3.63"	2.00"	SBV-4000-P	1

SW-2531 SPANNER WRENCH/DECK PLATE KEY

- Among the features of ARG, SS, SD and BVS series strainers are provisions on the strainer cap for the use of a spanner wrench to loosen the cap before or after maintenance. Hand-tight is a sufficient seal for GROCO® strainers with threaded caps, but some boaters may prefer to "snug" the cover beyond hand-tight. NOTE: Do not use SW-2531 to tighten non-metallic caps.
- Cast bronze with stainless steel pins to fit 1/4" and 5/16" holes.
- Opens to service deck plates or strainer caps with key holes up to 7" apart.
- Hangs conveniently near the strainer(s) location.
- Package quantity is nine (9).



**SW-2531
SPANNER
WRENCH**